



THE POWER TO **ENTHRAL**

The new RC 350 F SPORT coupé epitomises the thrilling driving experience and performance that Lexus is known for. Its long, low profile and sculpted bodylines aggressively slice the air as you're cradled inside the luxuriously composed cockpit. With a multitude of amenities, you'll find beautiful form and thoughtful function from headlight to tail light. Settle in for an exhilarating drive.

Model Shown RC 350 F SPORT.
South African vehicle specifications may differ.



DESIGNED FOR SPEED

CRAFTED FOR COMFORT

The performance of the 232kW and 380Nm, 3.5 litre V6 engine with 8-speed automatic transmission ensures that this vehicle offers seamless power. On the RC 350 F SPORT, speed, steering and other dynamic inputs are monitored by the Lexus Dynamic Handling (LDH) system. This makes for precise changes in the turning angle of the rear wheels for optimal stability and agility at higher speeds and excellent manoeuvrability at low speeds. The Rolling Resistance Coefficient (RRC) of the 19-inch summer tyres has been reduced, providing excellent ride comfort.

Custom-tuned suspension employs an Adaptive Variable Suspension (AVS) system that continually optimises the attenuation force of the shock absorbers to ensure riding comfort, stable control, performance and safety under a variety of driving and road conditions. The electronic power steering has been improved to optimise handling stability, further enhancing high-quality driving.



IMPRESSIVE

FROM

EVERY ANGLE

The rigid body of the RC F SPORT ensures agile performance, while the LED Auto High-Beam headlights house the newly designed LED Daytime Running Lights (DRL) to add to the overall sporty feel.

A wide stance and low centre of gravity come together with the newly designed F SPORT grille, front bumper and outer mirrors, wide bumper corners and front flares as well as a lower rear bumper. The striking newly-designed 10-spoke, 19-inch dark premium metallic alloy wheels feature prominent wheel arches that highlight the large diameter tyres and accentuate the RC F SPORT's profile. The RC F SPORT keeps things steady with double wishbone suspension in the front and multi-link suspension in the rear, assisted by aero-stabilising fins on the rear bumper corners.

The design enhancements on the RC F SPORT extend to the sporty rear, featuring rear bumper and garnish updates. The redesigned rear combination lamps feature integrated LED turn signals.



Model Shown RC 350 F SPORT.
South African vehicle specifications may differ.

LED AUTO HIGH-BEAM HEADLIGHTS

Cast a striking presence and embody the ideal balance of sophistication and safety. The intelligent high-beam system can automatically switch high beams to low beams when it detects vehicles ahead. Its unique visual arrangement is a new approach to headlamp design, improving both the breadth and dimension of light distribution.

EXTERIOR

ACTIVE BRAKE LIGHTS

Rear light clusters feature an array of LEDs to ensure the RC is highly visible to following traffic. When braking heavily, the brake lights – including the high-level centre LED stop lamp – pulse rapidly to provide an effective warning to following vehicles.

SIDE MIRRORS

The heated door mirrors can be folded in electrically to help negotiate narrow spaces and, when parked, there is less risk of damage. Electrochromatic technology also dims the mirrors to prevent the risk of being dazzled by following traffic.

ALLOY WHEELS

The 19-inch alloy wheels, with a striking 10-spoke design, come in a dark premium metallic finish, emphasising the sophisticated performance of the vehicle.

Model Shown RC 350 F SPORT.
South African vehicle specifications may differ.

AN INTERIOR REIMAGINED

Inside the new RC 350 F SPORT an impressive driver-centric cockpit awaits. The Remote Touch Interface employs Intuitive Touch-Sensitive Design using familiar smartphone finger commands to control the audio system while the navigation system can be voice activated. The unique new control interface was developed to amplify the tactile feedback of the RC's driving experience. The analogue clock, combination meters, heater and audio control panels have been redesigned, to complement the new interior look.

Model Shown RC 350 F SPORT.
South African vehicle specifications may differ.



Feel confidence through every curve with F SPORT front sport seats, designed to hold you through even the most aggressive turns. The smooth leather upholstered seats directly attach to the foam construction for a snugger, tighter, non-slip seat to ensure optimum occupant comfort and support, crucial in a sports coupé.

Model Shown RC 350 F SPORT.
South African vehicle specifications may differ.

IMAGINATIVE TECHNOLOGY

A REMOTE TOUCH INTERFACE

The Lexus innovative touch-sensitive Remote Touch Interface links the driver more directly to the audio and navigation systems of the vehicle. The unique new control interface was developed to amplify the tactile feedback of the RC's sports-coupé driving experience.

B STEERING WHEEL AND SHIFT KNOB

Combining exquisite craftsmanship with exceptional comfort, the interior features an unmistakable F SPORT shift knob and a 3-spoke heated steering wheel trimmed in hand-selected perforated leather with paddle shifters for gear-changing convenience.

C MARK LEVINSON AUDIO SYSTEM

The Mark Levinson audio system delivers incredible sound through 17 ultra high-efficiency speakers that can be linked to smart devices by either Apple CarPlay or Android Auto. All of these display the screen of the smartphone on the vehicle's infotainment screen as well as linking the phone's audio output to the vehicle's speakers.

D MOONROOF

The electric, tilt and slide glass moonroof lets the desired amount of moonlight or sunlight, as well as fresh air, into the cabin. One-touch control is quick and convenient.



Images shown for illustrative purposes.



A **SUSPENSION**

Adaptive Variable Suspension (AVS) automatically and independently adjusts the performance dampening of all four wheels to deliver maximum agility. In the vehicle's SPORT+ drive mode, the AVS helps you feel improved body control and precise responses to your steering.



B **ELECTRONIC POWER STEERING (EPS)**

The Electronic Power Steering integrates with the Drive Mode Select to adjust steering response for the different drive modes. The steering power-assistance curve can be varied to increase steering feedback, for a more direct steering feel – with Variable Gear Ratio Steering (VGRS) for F SPORT.



C **DYNAMIC HANDLING**

The Lexus Dynamic Handling (LDH) system monitors speed, direction, lateral G, and driver inputs to calculate the optimal angle for all four wheels. With Rear Wheel Drive (RWD), and Variable Gear Ratio Steering (VGRS), a powerful combination of features work together to independently manage front and rear steering angles improving turning response, rear grip, vehicle control, and overall agility through turns. LDH can alter rear wheel steering up to 2 degrees – at lower speeds, front and rear wheels turn in opposite directions; at higher speeds, they turn in the same direction.



D **PRE-CRASH SYSTEM**

The Pre-Crash System with Pedestrian Detection reduces the likelihood and severity of collisions by detecting imminent frontal impact and automatically preparing Brake Assist, reacting before you can, while the emergency brake signal acts to prevent rear-end collisions.



E **DRIVE MODE SELECT**

Drive Mode Select allows you to match the adaptable performance characteristics of your vehicle to your situation or even your mood. With six selectable drive modes, (Eco, Normal, Sport, Sport S+, Comfort, Custom) the engine responsiveness, gear-change characteristics, steering and even suspension are all tuned for economy, performance or comfort.



F **LANE DEPARTURE ALERT**

Lane Departure Alert with Lane Keep Assist uses a camera mounted behind the rear view mirror to help monitor your position in your lane and warns you if you inadvertently drift out of it. Automatic High-Beam uses the same camera to switch to low beam when the lights of oncoming or preceding vehicles are detected.



G **BLIND SPOT MONITOR**

The Blind Spot Monitor (BSM) has changed from 2nd generation to 3rd generation, providing optimised functionality in detecting all-round obstructions in adjacent lanes or when manoeuvring into parking bays.



H **VEHICLE DYNAMIC INTEGRATED MANAGEMENT (VDIM)**

The RC 350 F SPORT features a VDIM system that is designed to predict and take steps to help prevent a loss of traction even before it occurs by using a combination of throttle control, individual-wheel braking and steering torque assistance. The Sport S and Sport S+ VDIM mode setting adjusts the sensitivity of the vehicle skid control and traction control systems, raising the threshold before the system intervenes, thus enabling you to push the RC to its limits. The newly calibrated VDIM adds a vertical G-sensor to provide greater vehicle stability.

Engine and Drivetrain	RC 350 F SPORT
1st Gear Ratio	4.596
2nd Gear Ratio	2.724
3rd Gear Ratio	1.863
4th Gear Ratio	1.464
5th Gear Ratio	1.231
6th Gear Ratio	1.000
7th Gear Ratio	0.824
8th Gear Ratio	0.685
Artificial Intelligence-Shift Control	•
A/T Oil Temp Warning	•
Adaptive Variable Suspension (AVS)	•
Bore x Stroke (mm)	94.0 x 83.0
Catalytic Converter	9R*2+9R*2
Compression Ratio	11.8 : 1
Differential Gear Ratio	3.133
Displacement (cm ³)	3456
Driven Wheels	RWD
Emission Control	Euro 4-Without OBD
Engine Code	2GR-FKS
Engine Coolant	LLC 30%
Engine Monitor Warning	•
Engine Oil Cooler	•
Engine Oil Level Warning	•
Fuel Cut System (Impact sensing)	•
Fuel System	Petrol-EFI+D-4S
Maximum Power (kW @ r/min)	232@6600
Maximum Torque (Nm @ r/min)	380@4800-4900
Number of Cylinders and Arrangement	V-Type-6
Radiator	722*425*16
Reverse Gear Ratio	4.056
Stabiliser	Front + Rear
Starting System	Push Start
Suspension (Rear)	Multilink
Tool Set	Basic, Driver
Transmission	Automatic-8-speed
Valve Mechanism	24, DOHC, VVT-iW (Int), VVT-i (Exh)
Washer Fluid Level Warning	•
Battery	80D26L
Suspension (Front)	Double Wishbone
Paddle Shift	•
Exterior Features	
Air Spats	•
Antenna	Window
Body Colour	Monotone
Daytime Running Light	LED
Door Outside Handles	Colour Coded-Smart Entry
Engine Under Cover & Protector	•
Front Bumper	F SPORT
Front Fog Lamps	•
Windshield Glass	UV cut, Green
Grade Mark	F SPORT
Headlights	LED-Auto High Beam
Headlamps Cleaner	•
Headlamp Levelling	Automatic
High-Mounted Brake Light	LED

Light Control System	Autocut
Luggage Boot / Rear Door	Power
Model Name Mark	RC 350
Side Mirrors	Colour Coded, Power, Auto- Retractable, Electrochromatic, Memory, Blind Spot Monitor (BSM), Heated
Front Grille	F SPORT
Rear Lights	LED
Rear Fog Lamp	•
Front side Glass	UV cut, Green, Water Repellent
Back Glass	UV cut, Green
Front Window Wiper	Auto
Cornering Lamp	•
Roof	Moonroof, Tilt & Slide
Interior Features	
Package Trim and Tonneau Cover	•
AT Shift Lock	•
Assist Grip	2
Coat Hook	2
Clock	Analogue
Centre Console Box	•
Cup Holders	2
Door Inside Handles	Chrome
Door Scuff Plate	F SPORT
Door Pockets	Front
Door Trim	Synthetic Leather
Economy Meter	•
Floor Carpet Trim	Carpet
Front Headrest	Adjustable-2
Fuel Level Warning	•
Glove Box	Lockable
Key Reminder Warning	Buzzer
Luggage Room Lamp	•
Meter Illumination Control	•
Overhead Console	•
Rear Headrests	Adjustable-2
2nd Row Seats	60:40
Room Lamp	•
Seat Trim	Smooth Leather
Shift Lever & Knob	F SPORT
Shift Position Indicator	•
Steering Wheel	3 Spoke / F SPORT / Heated
Seat Back Pockets	•
Safety	
Airbag On-Off Switch	•
Anti-Theft System	Siren / Intrusion Sensor, Glass Break Sensor
Auto Door Lock	Speed Dependent
Child Restraint System (ISOFIX)	2
Curtain Airbags	•
Emergency Brake Signal	•
Front Airbag(s)	Driver + Passenger
Parking Brake	Foot
Front Brake	Ventilated Disc
Front Seat Belts	ELR, Pretensioner, Force Limiter
Knee Airbag(s)	Driver + Passenger
Power Door Lock	Double Lock

Pre-Crash System (Brake Synchronised)	Pre-collision Brake Assist
Rear Brake	Ventilated
Rear Seat Belts	ELR, Pretensioner, Force Limiter
Seat Belt Warning	Front + Rear / Buzzer + Light
Side Airbags	Front
Wireless Door Lock	Smart Entry
Rear Window Demister	•
Airbag Error Warning	•
Driver Support Systems	
Lexus Dynamic Handling with 4-wheel Steering	•
Tyre Pressure Monitor	•
Park Distance Control	Front + Rear
Anti-Lock Braking System (ABS)	•
Blind Spot Monitor (BSM)	With Rear Cross Traffic Alert
Brake Assist (BA)	•
Electronic Brake Force Distribution (EBD)	•
Hill Assist Control (HAC)	•
Traction Control (TRC)	•
Vehicle Dynamic Integrated Management (VDIM)	•
Vehicle Stability Control (VSC)	•
Drive Mode Select	Eco, Normal, Sport, Sport S+, Custom
Lane Keeping System	Lane Departure Alert
Performance	
0 - 100 (sec)	6.3
Top Speed (km/h)	230
Fuel Consumption (Combined Cycle) (l/100km)	9.1
CO ₂ (g/km)	212
Service and Warranty	
Service Intervals (km)	15 000km
Maintenance Plan	7years / 105 000km
Warranty	7years / 105 000km
Lexus Distance Plan	Lexus Distance Plan Complete
Wheel and Tyre	
Spare Tyre	Space Saver-T145-70D18-Alloy
Spare Wheel Carrier	In Boot
Wheel and Tyre	F:235-40R19 / R:265-35R19-Alloy
Convenience	
Cruise Control	Adaptive
Air Conditioner	Auto-Dual zone
Audio System	Mark Levinson / EMV, DAB
Auxiliary Input	•
Reverse Camera	EMV / With guidelines
Bluetooth	•
Disc Type	DVD
Door Ajar Warning	•
Footrest	•
Front Armrest	•
Front Seat Adjustment	Driver + Passenger Power / Driver Memory
Front Seat Vertical Adjuster	Driver + Passenger Power / Driver Memory
Light Remind Warning	Buzzer
Heater	Auto / Dual
Illuminated Entry	•

Multi-Information Display	TFT
Navigation System	EMV
Power Socket	Front - 12V
Power Steering	Electric (EPS) / Variable Gear Ratio Steering (VGRS)
Electric Windows	Front
Seat Heater	Driver and Passenger only
Seat Lumbar Support	Driver 2-way
Seat Ventilation	Front only
Speakers	17
Steering Column Adjustments	Power
Steering Switches	Audio, Telephone, Cruise Control, Info Display, Voice Command, Lane Departure Alert, Adaptive Cruise Control
Sun Visor	Mirror with Cover, Ticket Holder Driver + Passenger
USB	2
Door Courtesy Lamp	•
Dimensions and Capacities	
Washer Tank (l)	4.7
Approach Angle (°)	12.4
Departure Angle (°)	15.6
Front Overhang (mm)	930
Front Tread (mm)	1580
Fuel Tank Size (L)	66
Gross Combination Mass (GCM)	2170
Ground Clearance (mm)	135
Gross Vehicle Mass (GVM)	2170
Height (mm)	1395
Interior Height (mm)	1110
Interior Length (mm)	1875
Interior Width (mm)	1520
Kerb Weight (kg)	1680 - 1740
Length (mm)	4700
Luggage	374
Rear Overhang (mm)	1040
Rear Tread (mm)	1570
Turning circle (tyres, m)	5.0
Wheelbase (mm)	2730
Width (mm)	1840

EXPERIENCE ULTIMATE CONNECTIVITY WITH **MYLEXUS**

All Lexus vehicles can now be connected to the MyLexus App on your mobile phone, giving you more control of your driving experience and opening up a whole new world of personalised offerings and customisable features so that you can:



IN CAR Wi-Fi*

Connect to Wi-Fi



GPS LOCATOR

Always know your vehicle's GPS location



LOGBOOK

Have access to a digital logbook



DRIVER NOTIFICATIONS

Important reminders like licence renewal



BATTERY HEALTH CHECK

Check your battery health



SERVICE BOOKING

Manage your services



ROADSIDE ASSISTANCE

Get real-time roadside assistance



DRIVER RATING

Receive a driver rating



FLEET MANAGEMENT

Monitor your fleet

AND MORE

The above features are not all; there are loads of other features available to further enhance driver and guest safety, convenience and comfort, and plenty more to come to make your driving experience better and better with every kilometre.



**DOWNLOAD THE MYLEXUS APP
AND GET CONNECTED TODAY**

FIND OUT MORE AT [LEXUS.CO.ZA/MYLEXUS](https://lexus.co.za/mylexus)

*15GB Free data once-off upon activation. Ts & Cs apply. Available in South Africa only.

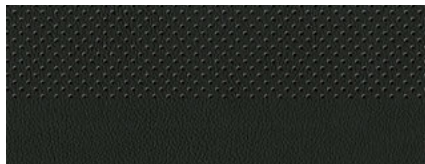
EXTERIOR COLOURS

In South Africa, ten different exterior paint finishes are available including: White Nova, Sonic Titanium, Mercury Grey, Black, Graphite Black, Solar Storm Red, Lava Orange, Naples Yellow, Poseidon Blue and Sparkling Meteor.

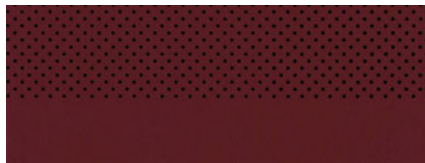
* Customer order only

INTERIOR COLOURS

The Lexus RC is available with a Black, Flare Red, White, or Mustard interior.



BLACK



FLARE RED



MUSTARD



WHITE



083 WHITE NOVA



1J7 SONIC TITANIUM



1H9* MERCURY GREY



212* BLACK



223* GRAPHITE BLACK



3T5* SOLAR STORM RED



4W7* LAVA ORANGE



5C1* NAPLES YELLOW



8X1* POSEIDON BLUE



8X9* SPARKLING METEOR



LEXUS MAINTENANCE

INTRODUCTION

At Lexus, we take pride in the advanced engineering and craftsmanship of the vehicles we build. For that reason, our Warranty and Distance Plans are designed to provide Lexus owners with seamless vehicle maintenance and complete peace of mind. The Lexus Warranty and Distance Plans both enjoy full support by Lexus SA and offer customers access to specialised servicing, maintenance and repair at any Lexus dealer in South Africa, Namibia and Botswana.

WARRANTY AND DISTANCE PLANS

To complement its comprehensive Warranty, the 2020 Lexus RC features a Distance Plan Complete that provides for service and maintenance costs. The option to extend the period of cover is available for both the Warranty and Distance Plan Complete. These options can be discussed with your Lexus dealer. To familiarise yourself with the cover provided by Warranty and Distance Plan on the 2020 Lexus RC, please consider the information below.

WARRANTY

- Duration: 7 Years or 105 000km from original date of sale.
- Cover: Repair or replacement of components that fail or malfunction as a result of manufacturing or material defect.

DISTANCE PLAN

The Lexus RC is covered by a Distance Plan Complete full maintenance plan for 7 years / 105 000km as well as a comprehensive manufacturer's warranty.

LEXUS LIFE

Our online magazine, Lexus Life celebrates innovative design, sustainable technologies and premium experiences around the globe.

Download the app from Google Play or the App Store.

Keep up to date with all things Lexus here:

www.lexus.co.za/lexus-life



Certain vehicle details and specifications contained in this brochure may differ from available models. Toyota Motor Corporation of Japan and Toyota SA (Pty) Ltd. make no warranties, either expressed or implied, concerning the verisimilitude of contained material. Toyota reserves the right to alter any details of specifications and equipment without notice. Waste Tyre Registration Number: TPREG0031GAU.

© 2015 Lexus South Africa* reserves the right to alter any details of specifications and equipment without notice. Details of specifications and equipment are also subject to change to suit local conditions and requirements. Please enquire at your local Lexus Authorised Dealer of any such changes that might be required for your area.



Find Lexus South Africa on:  Lexus South Africa  @Lexus_SA  lexus_southafrica
For a detailed list of specifications please visit www.lexus.co.za

PMN04R0002 Date 2020/01.